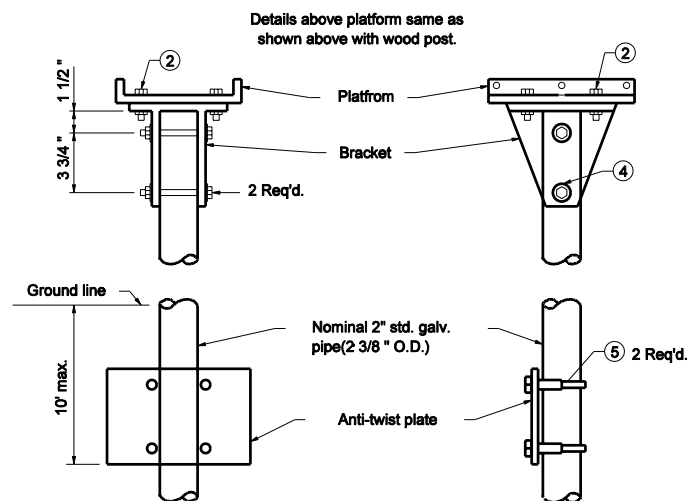


WITH WOOD POST



WITH PIPE POST

LEGEND

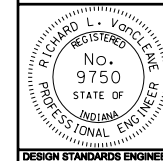
- ① #8-32 x "L" truss head machine screw with two #8 flat washers, #8 lock washers, and #8 hex nut.
- ② 5/16"-18 x 3/4" hex cap screw with two 5/16" flat washers, 5/16" lock washer and 5/16" hex nut.
- ③ 5/16"-18 x 4 1/2" hex cap screw with two 5/16" flat washers, 5/16" lock washer, and 5/16" hex nut.
- ④ 5/16"-18 x 3" hex cap screw with two 5/16" flat washers, 5/16" lock washer, and 5/16" hex nut.
- ⑤ Nominal 2 3/4" muffler clamp
- ⑥ For platform, bracket, shelf, spacer and anti-twist plate details, see Standard Drawing E 611-MBAS-03.

INDIANA DEPARTMENT OF TRANSPORTATION

SINGLE MAILBOX ASSEMBLY

MARCH 2005

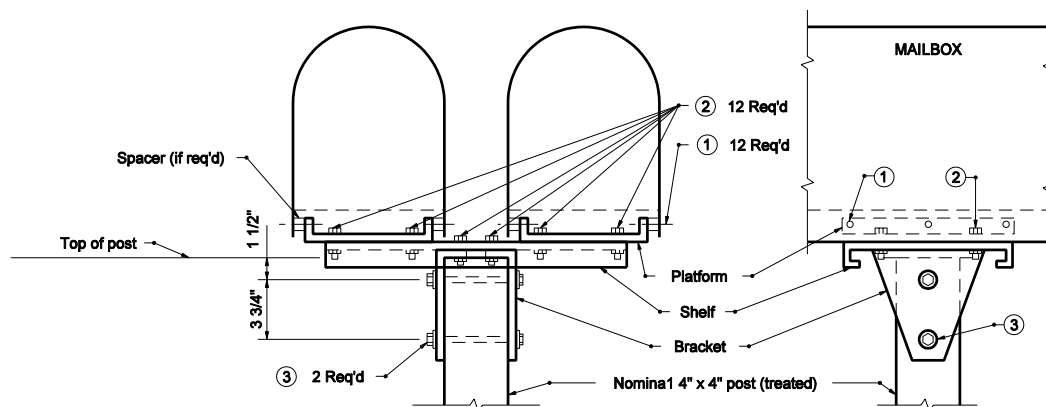
STANDARD DRAWING NO. E 611-MBAS-01



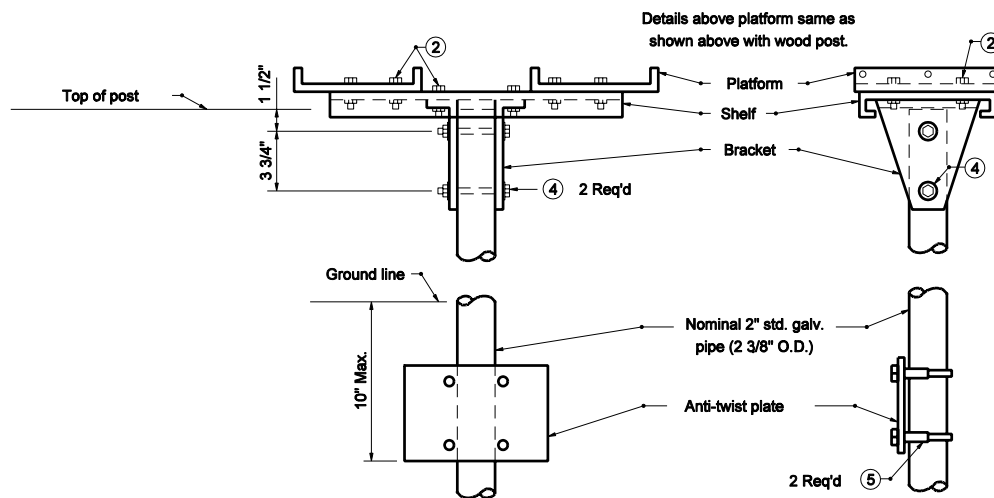
/s/ Richard L. VanCleave 3-01-05
DESIGN STANDARDS ENGINEER DATE

/s/ Richard K. Smutzer 3-01-05
CHIEF HIGHWAY ENGINEER DATE

DESIGN STANDARDS ENGINEER



WITH WOOD POST



WITH PIPE POST

LEGEND

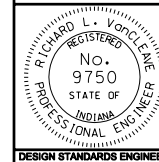
- ① #8-32 x "L" truss head machine screw with two #8 flat washers, #8 lock washers, and #8 hex nut.
- ② 5/16"-18 x 3/4" hex cap screw with two 5/16" flat washers, 5/16" lock washer and 5/16" hex nut.
- ③ 5/16"-18 x 4 1/2" hex cap screw with two 5/16" flat washers, 5/16" lock washer, and 5/16" hex nut.
- ④ 5/16"-18 x 3" hex cap screw with two 5/16" flat washers, 5/16" lock washer, and 5/16" hex nut.
- ⑤ Nominal 2 3/4" muffler clamp
- ⑥ For platform, bracket, shelf, spacer and anti-twist plate details, see Standard Drawing E 611-MBAS-03.

INDIANA DEPARTMENT OF TRANSPORTATION

DOUBLE MAILBOX ASSEMBLY

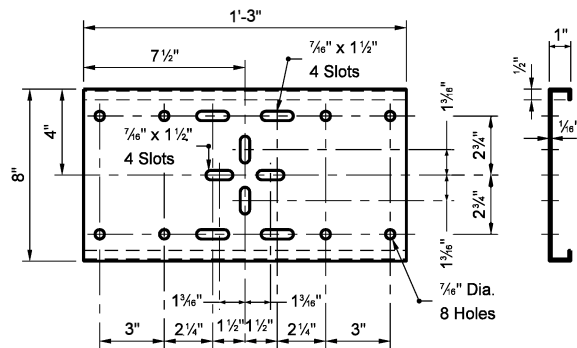
MARCH 2005

STANDARD DRAWING NO. E 611-MBAS-02

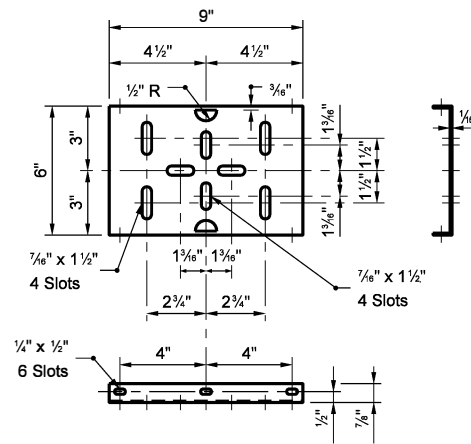


/s/ Richard L. VanCleave	3-01-05
DESIGN STANDARDS ENGINEER	DATE
/s/ Richard K. Smutzer	3-01-05
CHIEF HIGHWAY ENGINEER	DATE

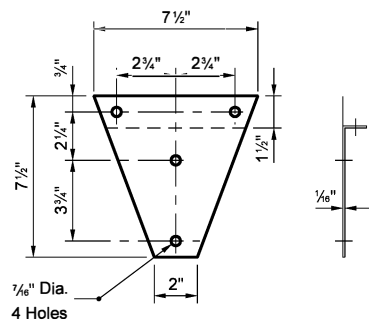
DESIGN STANDARDS ENGINEER



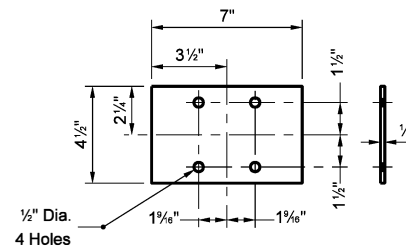
SHELF



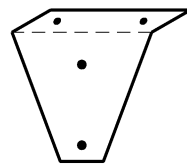
PLATFORM



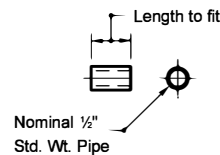
BRACKET



ANTI-TWIST PLATE



FINISHED BRACKET
ISOMETRIC



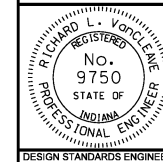
SPACER

INDIANA DEPARTMENT OF TRANSPORTATION

MAILBOX SUPPORT HARDWARE

MARCH 2005

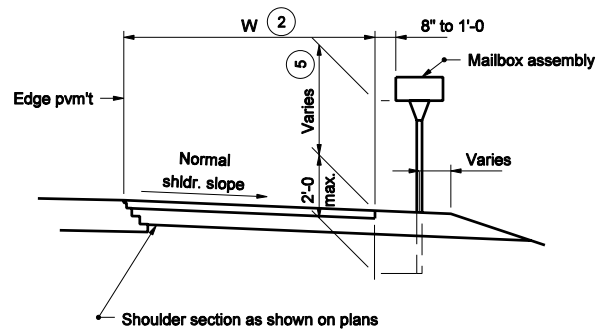
STANDARD DRAWING NO. E 611-MBAS-03



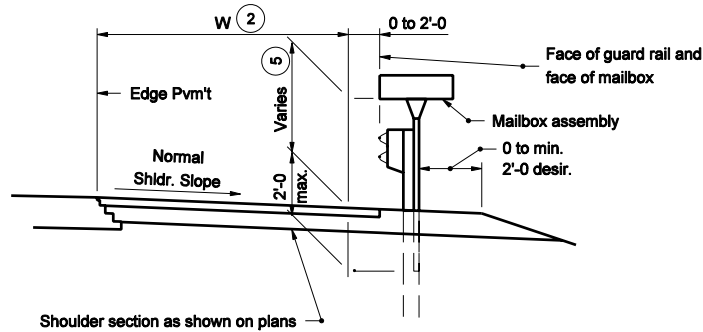
/s/ Richard L. VanCleave 3-01-05
DESIGN STANDARDS ENGINEER DATE

/s/ Richard K. Smutzer 3-01-05
CHIEF HIGHWAY ENGINEER DATE

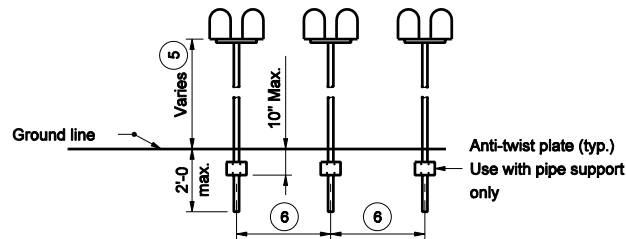
DESIGN STANDARDS ENGINEER



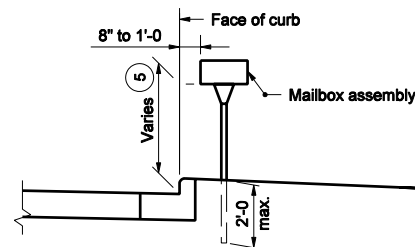
NORMAL SHOULDER SECTION



SHOULDER SECTION WITH GUARDRAIL



SPACING FOR MULTIPLE POST INSTALLATION



CURBED SECTION

GENERAL NOTES

- ② See plans for W
- ⑤ The normal height range is 3'-3 to 3'-11. Contact the local postmaster to establish appropriate installation height.
- ⑥ Established by the U.S. Postal Service, usually 3'-4 to 4'-0.

INDIANA DEPARTMENT OF TRANSPORTATION	
MAILBOX ASSEMBLIES ELEVATION VIEW	
MARCH 2005	
STANDARD DRAWING NO. E 611-MBAS-04	
	/s/ Richard L. VanCleave DESIGN STANDARDS ENGINEER DATE 3-01-05
	/s/ Richard K. Smutzer CHIEF HIGHWAY ENGINEER DATE 3-01-05
DESIGN STANDARDS ENGINEER	